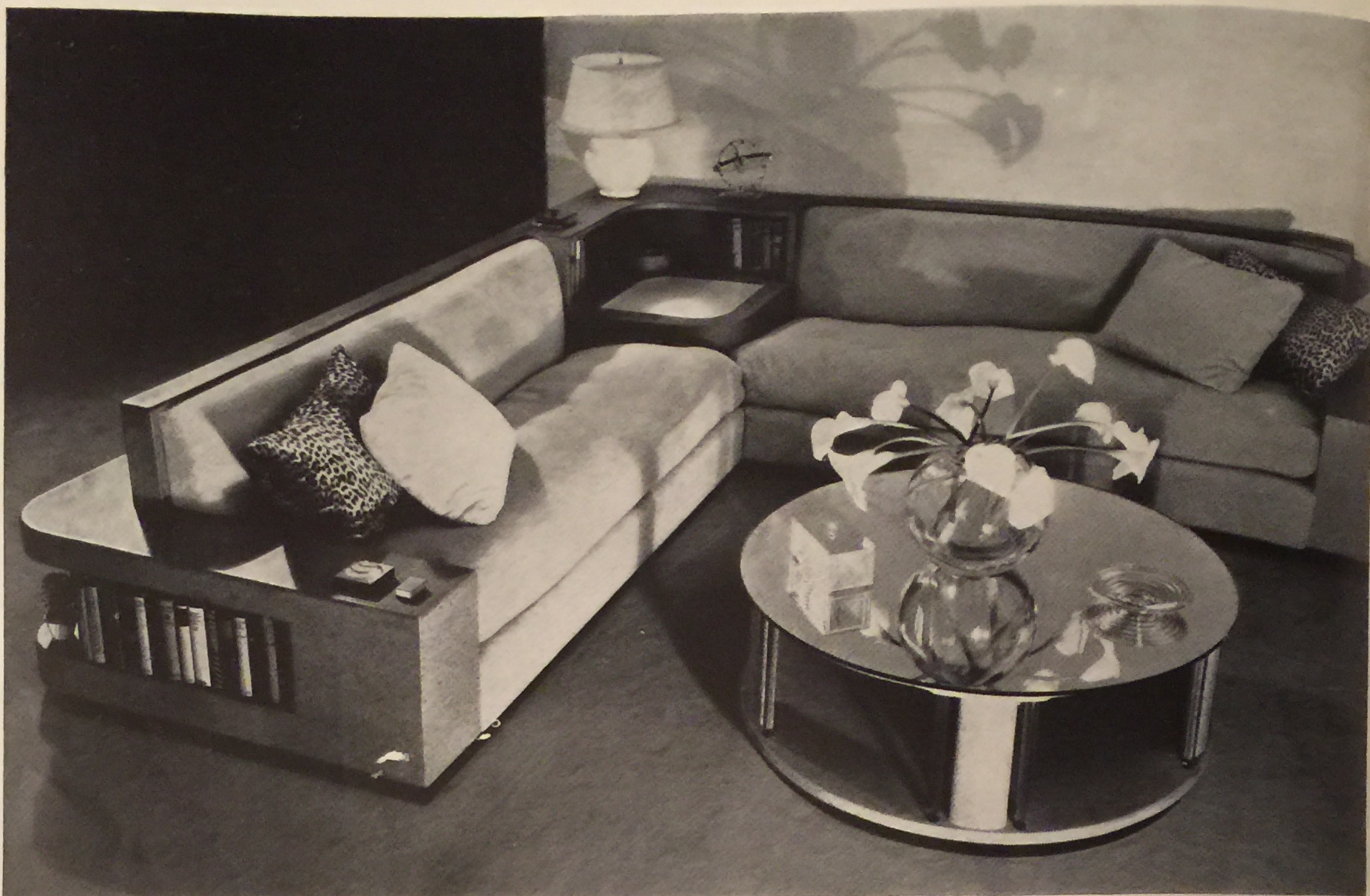


HOUSE & GARDEN

A Condé Nast Publication



Little Houses and Small Rooms • July, 1934 • Price 35 Cents



The apartment of Roger Wolfe Kahn, by Paul T. Frankl



IN THE past twenty years the room layout and size of apartments has definitely changed, and the change has affected their furnishing and decoration. Our rooms are much less cluttered with useless objects, and simplicity of line makes for restfulness and utility.

This corner sofa creates a corner where there is no corner and thereby gives an architectural feeling to Mr. Kahn's living room. Soft cork is used to cover the wood frame, and the upholstery of the couch is natural colored lapin cloth. The walls of the living room are covered in light beige Japanese grass cloth put up in blocks. The cork table has a mirror top that is supported by glass rods

AMONG the newer tenets of the modernist is the abandonment of grotesque angles and the substitution of the curve. The former lacked charm; the curve is beginning to bring an air of grace into our contemporary rooms. Witness Mrs. Kahn's bedroom.

It is done in shades of white, with accents of pale blue. Modern air-conditioning which does not require the opening of windows makes it possible to use white even in cities with dust-laden air. The circular bed is reflected, in this picture, in a mirror that carries out the round features of the room. This room gains its restfulness by the dominant whites and its charm by the curves

EACH exponent of modernism eventually reveals the source of his most compelling inspiration. Mr. Frankl's is Japanese. The dressing table in the bedroom opposite is obviously of Japanese extraction. Some of the stark simplicity found in Japanese homes is also evident in this black and white entrance foyer. Long mirrors are lighted from pedestals below. Glass columns flank the mirrors. One decorative pattern picture is set flat on the wall. The only other design activity is in the zebra cloth

THE old-fashioned word "cosy" is rarely associated with modern decoration; in fact, much of this contemporary decoration would seem to avoid that atmosphere as though it were the plague. And yet a modern room can be cosy. Here this comfortable spirit is found in Mr. Kahn's living room. The fireplace mantel is painted black and so are the leather arms of the deep, low, inviting chairs. Their seats and back are covered with an astrachan material. The low table is reflected in gun metal mirrors



NYHOLM - PHILLIPS



General Electric presents the new G·E IMPERIAL Range



FROM the famous General Electric House of Magic comes a new super-automatic electric range. Its modern beauty and striking style exemplify the new trend in kitchen planning and design.

To those homes gifted with full appreciation that genuine hospitality, good health, and the art of fine living depend much on the kitchen, General Electric dedicates this new G-E Imperial — the most modern, finest equipped range ever presented. It brings amazing advancements in speed, in


convenience, and in the preparing and serving of more tasteful, more delicious foods. It incorporates features, refinements and new ideas never before achieved in any range.

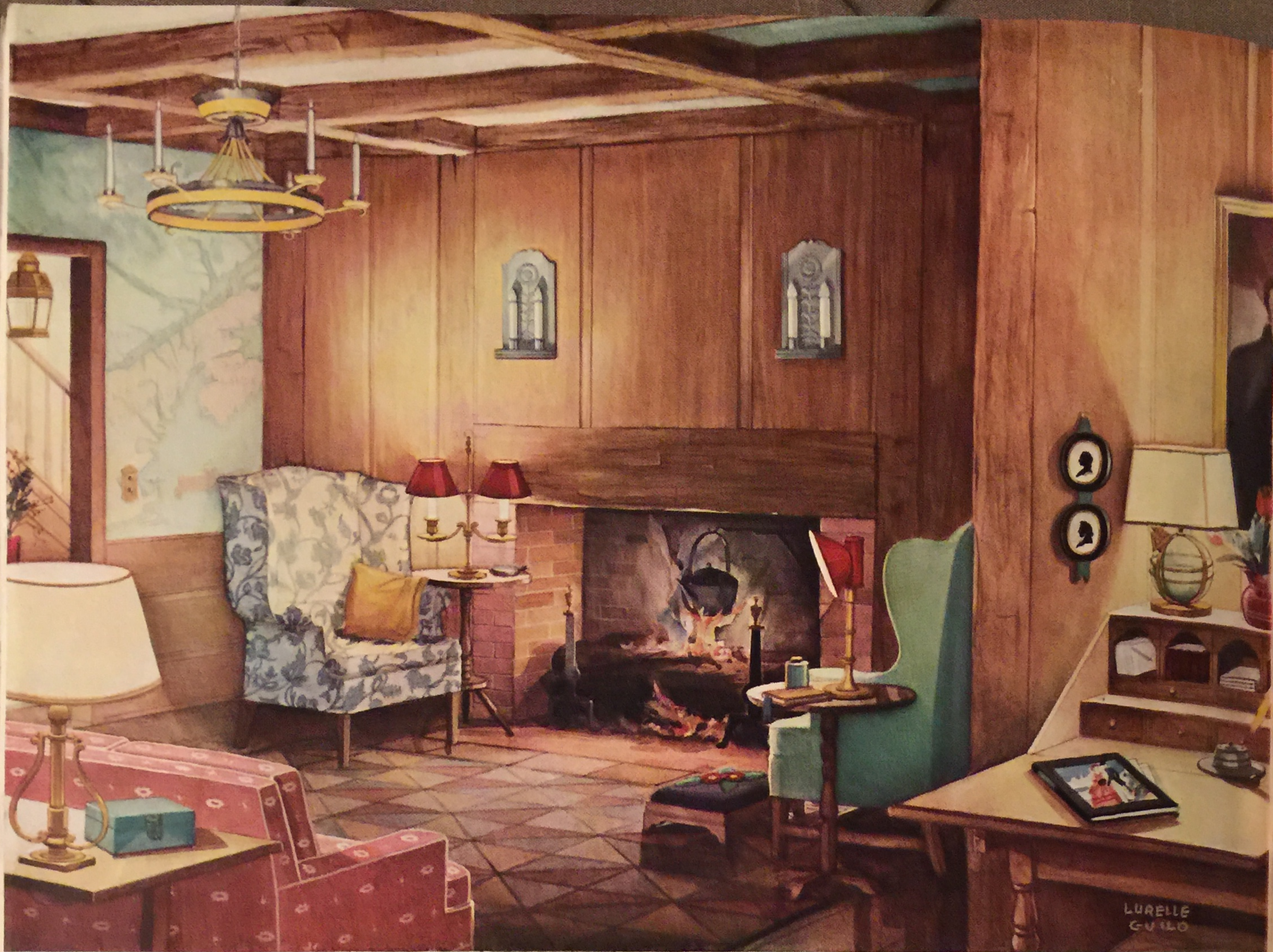
Gleaming white porcelain and smooth stainless metal assure sparkling cleanliness at all times. All switches and controls are centralized on the new aviation type control panel. Automatic temperature controls have radio type illuminated dials. There is a built-in Telechron timer and clock, a minute

minder to exactly time any cooking operation, automatic lighting in the oven and sliding shelves that eliminate stooping.

The G-E Imperial Range has two large ovens, three surface units, Thrift Cooker and extra large warming oven. It is equipped throughout with the new G-E Hi-Speed Calrod heating unit that makes electric cookery faster and far more economical.

See your G-E range dealer for deliveries. General Electric Co., Section K7, Nela Park, Cleveland, Ohio.

GENERAL  **ELECTRIC** *Range*



Beautifully lighting the hall of this charming Early American interior is the Chase Williamsburg Lantern, \$18.50. In the living room: The Brookfield Ceiling Fixture, \$37.50; The Connecticut Sconce \$10.00. The four Chase Lamps, shown from left to right: The Admiral Lamp, \$14.25, base only \$12.00; The Mt. Vernon Lamp, \$13.50; The Barnett Lamp, \$12.00; and The Flying Cloud Lamp, \$24.00, base only \$15.00.

HOUSE & GARDEN *welcomes the* FIRST ENSEMBLE *of* AUTHENTICALLY DESIGNED LIGHTING FIXTURES *and* LAMPS

*A*T last, the long awaited improvement in lighting has come. For fifty years we have had electricity but in all these years no one has made fixtures and lamps of *truly authentic design at reasonable prices.*

If you've ever built a home; ever remodeled or redecorated, you know what a problem lighting fixtures have been. You either paid high prices for specially designed models or were forced to buy unattractive fixtures made of ordinary materials in bad taste.

No wonder "HOUSE & GARDEN" welcomes Chase Lighting—the first and most complete ensemble of authentically designed fixtures and lamps ever created—all beautifully styled by Lurelle Guild, eminent artist and designer, and

finely executed in lasting, non-rusting brass by Chase.

Whatever the style or period of your home, refixturing now becomes easy and inexpensive for Chase Lighting includes charming sconces, brackets, lanterns, chandeliers, table and floor lamps of correct design and exquisite taste for every important period of decoration.

There are sturdy iron finished fixtures for brick and timber English homes. Quaint Early American and stately Federal fixtures and lamps for Colonial homes. And for Georgian, Empire, and Classic Modern homes, Chase Lighting includes every needed fixture and lamp. Priced so considerably, too! From one-third to one-half less than comparable fixtures ever cost before. Prices shown are for wired fixtures only—do not include small installation cost.

CHASE



LIGHTING...



"Only a good designer and a sympathetic manufacturer working together could produce the splendid and diverse patterns that comprise Chase lighting fixtures and lamps. Behind the designs lies the romance of tradition, and something of that romance and awareness of tradition will pass over to those who select them for their homes. They are calculated, in the finest sense, to stimulate a justifiable pride of ownership."

Richard Wright Editor,
House & Garden

EARLY ENGLISH



THE SUSSEX 13.50



LONDON TOWER 20.00



THE CROMWELL 28.00



FLYING DOLPHIN 12.00
Base only 10.00

EARLY AMERICAN



THE WITCH LIGHT 12.00



THE HARTFORD 15.00



THE COLEBROOK 35.00



THE GLOUCESTER 8.75
Base only 7.50

FEDERAL



THE MONTICELLO 20.00



THE CHARLESTON 37.50



THE RICHMOND 35.00



THE LIBERTY 19.50
Base only 11.50

GEORGIAN



THE PEMBROKE 20.00



THE SHAFTESBURY 38.00



THE YORKTOWN 42.00



THE MELTON 9.00
Base only 6.50

EMPIRE



THE ORLEANS 16.00



THE TEA TRADE 17.50



THE VENDOME 45.00



THE SWAN 22.50
Base only 15.00

CLASSIC MODERN



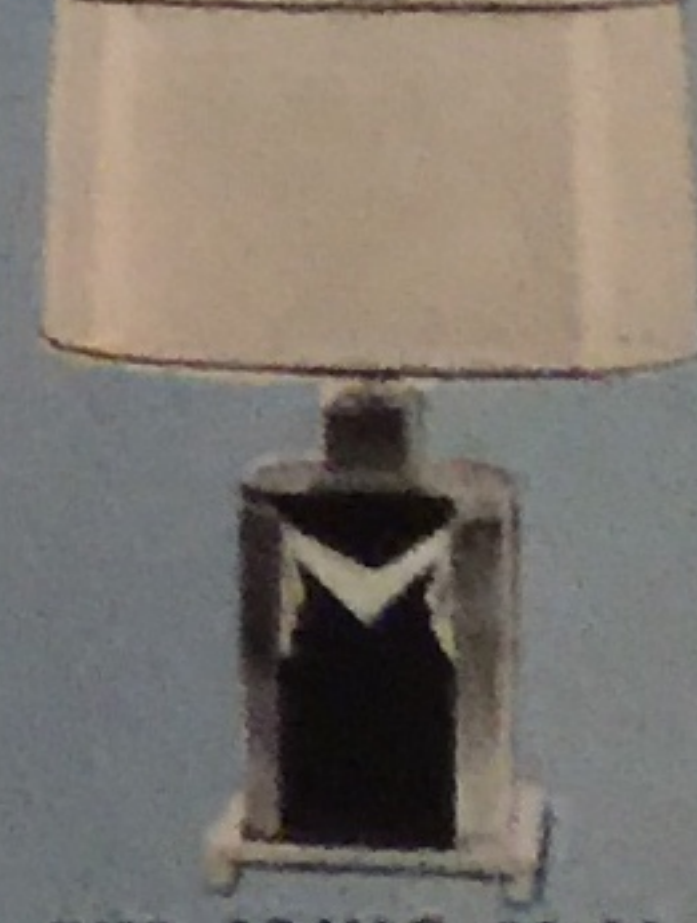
THE ATHENA 17.50



THE ROMA 10.00



THE AURORA 40.00



THE IONIC 33.00
Base only 18.00

Refixture your home now! Pay for it easily
on the Chase Time-Payment Plan

• Chase Lighting Dealers are now presenting the first showing of Chase Fixtures and will gladly explain the Chase Finance Plan which enables home owners to refixture with Chase Lighting on convenient monthly terms. For name of your nearest dealer write Chase Brass & Copper Co., Inc., Dept. H1, 10 East 40th Street, New York City.



FREE! Your choice of these beautiful folders showing Chase Fixtures for each period

• Whether remodeling, redecorating or building, Chase Fixture Folders will be helpful to you. Separate folders are available showing fixtures for each of the periods above. Write Chase Brass & Copper Co., Inc., Dept. H1, 10 East 40th Street, New York City, mentioning style of house or period of decoration in which you are interested.

FIXTURES



LAMPS



In this bathroom, walls of Gray Carrara, set in large, polished blocks, form an unusually harmonious background for the black fixtures. Black Carrara is used to advantage as cap and base trim and as a smart frame for the mirror over the wash-stand. Note the large slabs of Gray Carrara which form the sides and top of the open linen cabinets.

In Carrara Walls for Bathrooms

Beauty and Utility are Wedded

NEVER before has any wall material blended so perfectly the charm of good looks with the qualities of practical utility. Walls of Carrara Structural Glass in your bathroom not only fascinate the beholder by their polished, reflective loveliness and their rich, mellow color-tones, but also fulfill with eminent success those practical requirements which bathroom walls should have to be thoroughly satisfactory.

They will not craze, check, discolor with age, or absorb bathroom odors. To keep them spotlessly clean, an occasional wiping with a damp

cloth suffices. By Carrara's aid, you can remodel your present bathroom with a welcome minimum of plaster dust and disorder . . . because Carrara Walls can usually be installed directly over your old walls. Yet with all their advantages, walls of Carrara Structural Glass cost very little more than walls of ordinary materials.

Write for our interesting folder containing complete information on Carrara Walls and illustrations in full color of typical Carrara bathrooms and kitchens.

Address Pittsburgh Plate Glass Company, 2214 Grant Building, Pittsburgh, Pennsylvania.

CARRARA

— The modern structural glass —

A PRODUCT OF THE PITTSBURGH PLATE GLASS COMPANY