

House Beautiful

PRICE 35 CENTS

COMBINED WITH HOME & FIELD

JANUARY 1939





RICHARD AVERILL SMITH



ROBERT A. DAMORA

HOME TALENT

Walter Dorwin Teague, industrial designer extraordinary, turned his creative energies to making this apartment for himself at River House. It has large rooms, rich surfaces, glowing colors



Walter Dorwin Teague silhouetted against the World's Fair Ford Exhibit he designed

BY DAY he is feverishly at work designing exhibits for The World of Tomorrow (his are Ford Motor, United States Steel, du Pont, Consolidated Edison, Eastman Kodak, National Cash Register, A. B. Dick). What sort of rooms does Walter Dorwin Teague, designer to millions, design for himself? The answer you see in the pictures. It is an apartment, modern but never stark—rather, elegant and rhythmic. He has evoked at River House a vast living room of which about half is shown opposite, the remainder being another conversation group and a dining section. W. and J. Sloane did the structural work, realized the furniture Mr. Teague designed. A circular rug dominates the picture, framed by a curving sofa facing the fireplace. Mrs. Teague is seen sitting on this couch. The mirrored panel over the fireplace is by Max Ingrand of Paris, as are the panels on the front of the cabinet in the picture below, under a portrait which the English artist William Dobson painted in 1634. The wood throughout the apartment is pickled rift oak with a rich grayish sheen, accented by gold lacquer. The walls are yellow-white, the great circular rug oyster white. Upholstery fabrics are rust, beige, turquoise and yellow. The turquoise occurs again in the bedroom, where it is the color of the carpet.

This apartment points vividly the advances being made in the modern style. Lines flow and curve. There is no awkward angularity, no harshness of texture or color. The style has become, in the hands of a man of great taste, quiet and distinguished and assured.

Below are two pictures of the bedroom. Here between yellow hangings is a dressing table composed of a glass shelf, a block of drawers, a mirrored wall and a pair of very efficient lamps. The little bench is upholstered in the same yellow stuff as makes the draperies. The chair is rust-colored. At the foot of the page you see the bed, which has an off-white coverlet, a pair of reading lights which are twins of the dressing table lamps save that these are horizontal. The tall chest, rift oak like the other wood furniture in the apartment, has a gilded device as handle on the doors



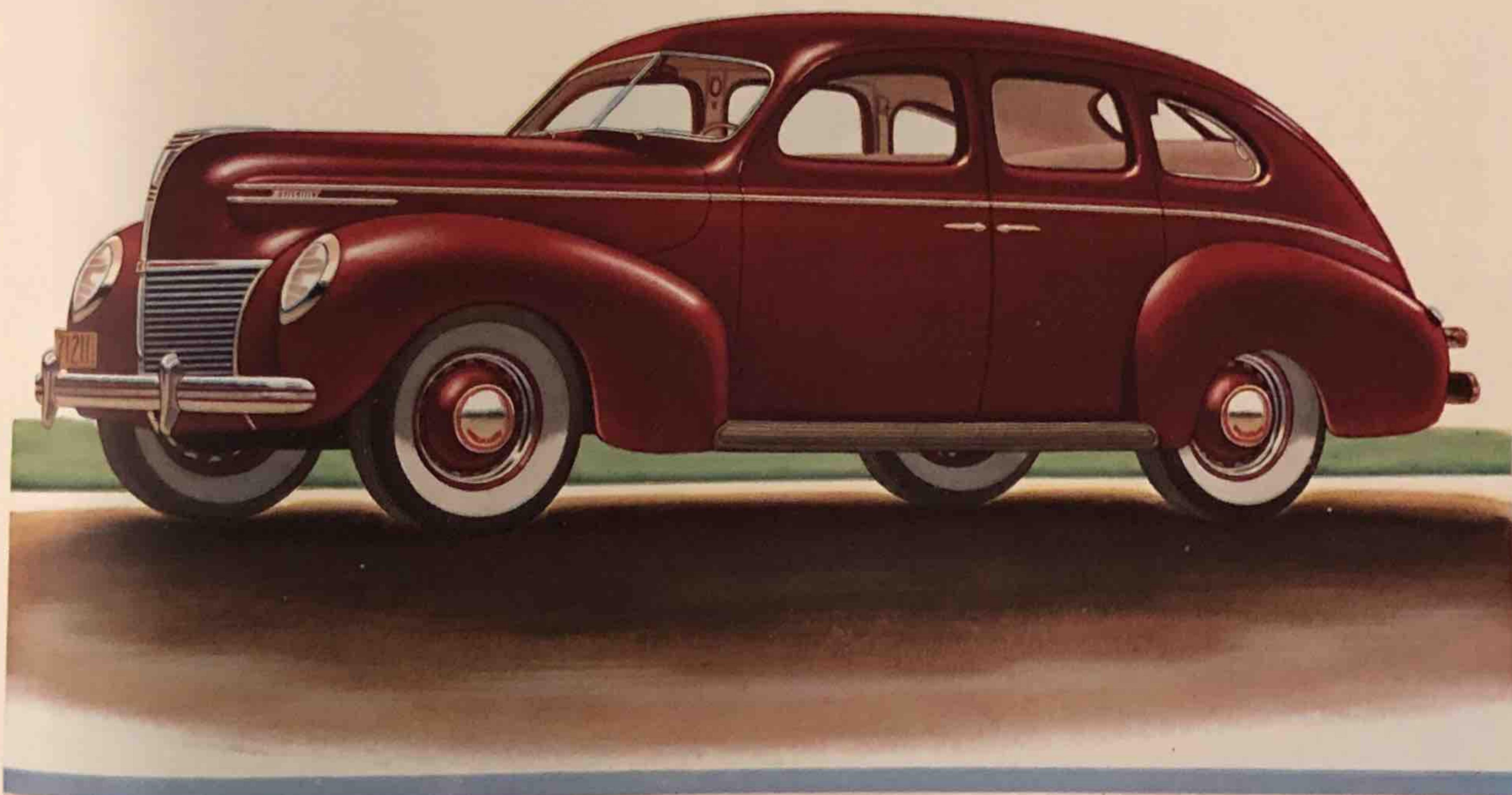
ROBERT M. DAMORA

This year a new car joins the Ford-Lincoln family . . . fulfilling the desire of many motorists for a quality car priced between the Ford V-8 and the Lincoln-Zephyr V-12 and combining many virtues of each. The Mercury 8 brings to a new price field the Ford tradition of progressive engineering, mechanical excellence and outstanding value.

THE NEW

MERCURY V 8 TYPE

A PRODUCT OF THE FORD MOTOR COMPANY



The Mercury 8 is a big, wide car with exceptional room for passengers and luggage. Clean, flowing body lines are Lincoln-Zephyr inspired. A new 95-horsepower V-type 8-cylinder engine provides an extremely favorable power-to-weight ratio and assures brilliant performance with V-type economy. Mercury brakes are hydraulic; body and chassis all-steel. Appointments and upholstery are luxurious. New developments in weight distribution, soundproofing and seat construction make the Mercury an extremely comfortable and quiet car. . . . Your Mercury dealer invites you to see and drive this new quality car—a new name, a new car, and a new value for 1939.

FEATURES OF THE NEW MERCURY 8

116-inch wheelbase; more than 16 feet over-all length • exceptional width and room for passengers • new 95-hp. V-type 8-cylinder engine • new hydraulic brakes • modern flowing lines •

luxurious appointments and upholstery • new soft seat construction • thorough scientific soundproofing • balanced weight distribution and center-poise design • large luggage compartments.

FORD-BUILT MEANS TOP VALUE



FORD MOTOR COMPANY, MAKERS OF FORD, MERCURY, LINCOLN-ZEPHYR AND LINCOLN MOTOR CARS

Modern
reaches its peak... here!



You've a right to expect the unusual, the finest, the peak of Modern, at Modernage! Whether you are furnishing a home, or looking for those final accessory details that "make" your decoration, you'll see a greater selection here than anywhere else!

Modernage
162 East 33rd St.
New York

Illustrated booklet available. Send 15¢ for mailing